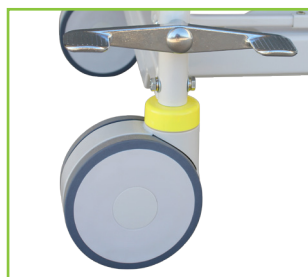


4000 MK II PATIENT TROLLEY NARROW SERIES



Forward Trendelenburg



150mm Anti-Static Castors



Push Handle



**'IDEAL DAY
SURGERY BED/
RECOVERY TROLLEY'**

The Alrick 4000 MK II Patient Transfer Trolley is designed specifically as a day surgery bed and recovery trolley. The Anti-Static Central Locking Castors take the strain off the carer by making the trolley extremely smooth and easy to manoeuvre, while the Trendelenburg feature allows the carer to regulate the patients' blood circulation during transfer between the operating room and ward.

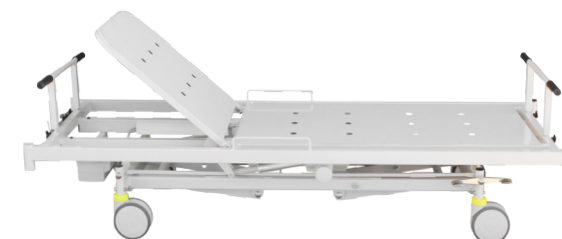
Electric Hi/Low
Electric Backrest
Electric Forward &
Reverse Trendelenburg
150mm Twin Wheel Central
Locking Castors
Push Handles
Battery Backup
4 Corner Buffers
SWL 250KG

Minimum Height - 390mm
Maximum Height - 830mm
Overall Width - 840mm
Overall Length - 2230mm

Sleeping Surface - 2025mm x 720mm

Underbed Clearance 160mm

Angles - Back 7° Trendelenburg 16° Reverse 16°



ACCESSORIES AVAILABLE TO SUIT 4000 MK II PATIENT TROLLEY



360HR Horizontal Side Rails



380VR Vertical Side Rails



400HR Deluxe Rails



ASHP Self Help Pole



AIVP I.V. Pole



TBR2000 T Bar Buffer



CLP400 Clamp On Support Rail 400mm



C.EXT4000N Clip On Extension (200mm)



BMR Bed Mover Wheel Set



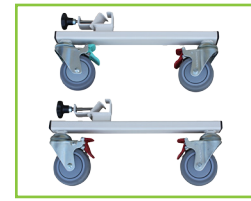
COT PRO Padded Side Rail Protectors



OBT OverBed Table



OBC Oxygen Bottle Carrier



BMR Bed Mover Wheel Set

OPTIONS AVAILABLE TO SUIT 4000 MK II PATIENT TROLLEY



PO EXT4000N Pull Out Extension (200mm)



N400KB Kneebreak



ACC Economy Attendant Control



ACO Deluxe Attendant Control



CPR Emergency Release



A 35 Temple Drive | Thomastown Victoria 3074

P 1800 282 001 **F** 1300 648 604 **E** sales@alrickhealthcare.com.au

www.alrickhealthcare.com.au

E & O.E.